



HYNADecor[®]

ALUMINIUM COMPOSITE PANELS



1st 
FR
COMPANY IN INDIA



Version 2.0

ABOUT COMPANY

HYNADecor is one of the leading manufacturers of Aluminium composite panels (ACP) in India. HYNADecor, an ISO 9001:2015, ISO 14001:2015 & OHSAS 18001:2007 certified company was set up since 2013 in New Delhi. We are manufacturing aluminium composite panels (ACP) under the brand name of “HYNADecor”. Our manufacturing facilities are located at Sonipat in Haryana and it’s spreading in an area of 8093 SqMtr. We have a fully automatic high tech FR grade ACP manufacturing compatible machine and has an integrated infrastructure as well as a talented pool of professionals operate it. The production capacity is approx. 1, 44, 000, 00 Square fts per annum. The plant is equipped with all safety measures and generator to ensure uninterrupted production. We have in house all raw materials facilities as well as quality check labs to maintain highest international standards and where quality endurance tests are conducted as per ASTM Standards.

We have India’s first a fully automatic high tech fire retardant ACP manufacturing compatible machine and it’s specialize in manufacturing fire retardant aluminium composite material with international standards. We tend to implement best practices and also invent new practices as to stay above the rest in the manufacturing sectors. The main parameters which determine HYNADecor FR are quality, cost effective, flexibility and innovation. It’s used to be very difficult to extrude mineral-filled core, but our advanced technology has enabled us to produce HYNADecor (FR) as efficient as ordinary core materials. It is green material, as there is no harmful burning.

HYNADecor FR grade meet the highest requirements of the fire regulations and is therefore the ideal material for all areas where fire protection plays an important role— be it for high-rise or industrial buildings, public buildings, hospitals, hotels, tunnels or underground stations. Furthermore, with its proven product and processing properties, HYNADecor FR grade aluminium composite panels offer architects designers’ unlimited opportunities for realizing their ideas.

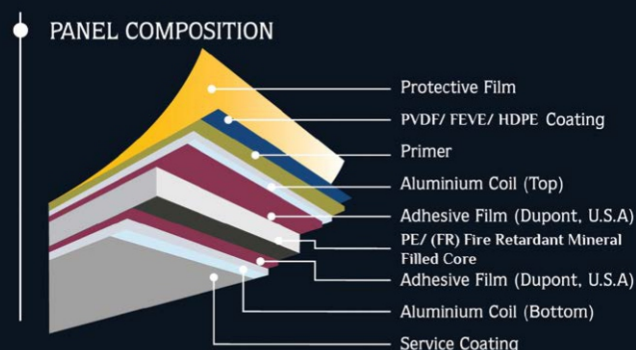
We are also committed to innovation in designing building products....

PANEL DIMENSIONS

Al. Skin Thickness	0.25mm to .5mm	STANDARD	1220 mm x 3660 mm
Thickness	2mm to 6mm	SlzES	1220 mm x 3050 mm
Coating	PVDF		1220 mm x 2440 mm
Length	Upon Request		
Width	1220mm		

PRODUCT TOLERANCE

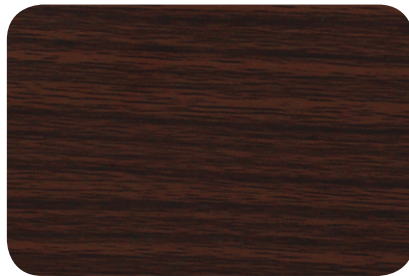
Width	0/±4.0mm
Length	0/±6.0mm
Thickness	4mm thick ±0.2mm
Bow	0.5% of length & Width
Squareness	Max 5.0mm



Wooden Series



HD-200 ROYAL WALNUT ● ●



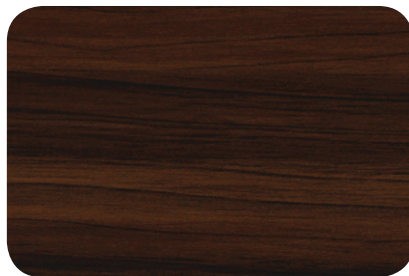
HD-201 CARISMA WOOD ● ●



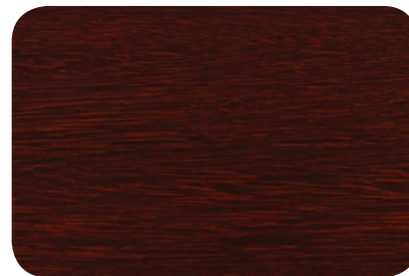
HD-202 TROPICAL TEAK ● ●



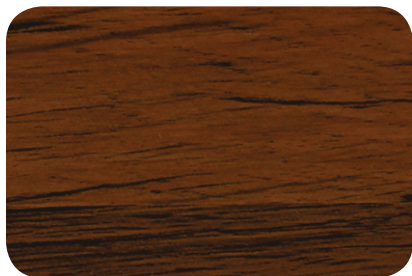
HD-203 NEW EBONY ● ●



HD-204 SPLATED RUST WOOD ● ●



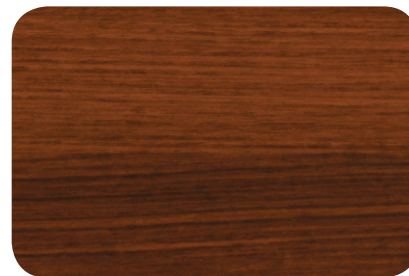
HD-205 ROSE WOOD ● ●



HD-206 NATURAL WOOD ● ●



HD-207 INDIAN WALNUT ● ●



HD-208 ROYAL WOOD ● ●



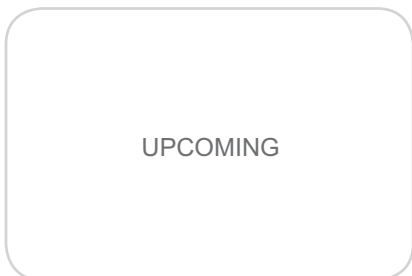
HD-209 NEW OAK PINE ● ●



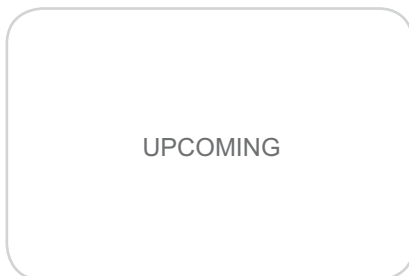
HD-210 ZEBRA WOOD ● ●



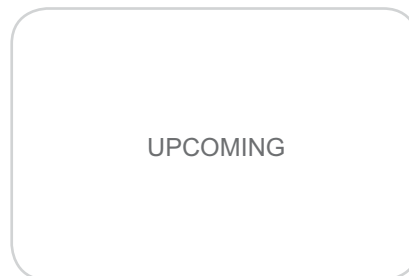
HD-211 AFRICAN WOOD ● ●



UPCOMING

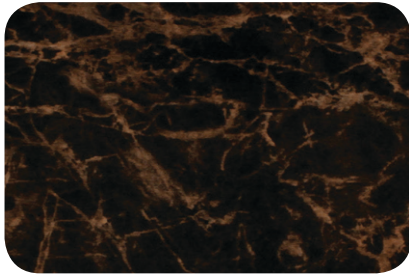


UPCOMING



UPCOMING

Marble, Mirror, Sparkle, Glossy & Brush, Series



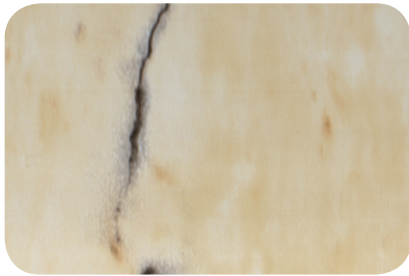
HD-300 EMPERADOR ●●



HD-301 BLACK MARBLE ●●



HD-302 ITALIAN MARBLE ●●



HD-303 YELLOW STONE MARBLE ●●



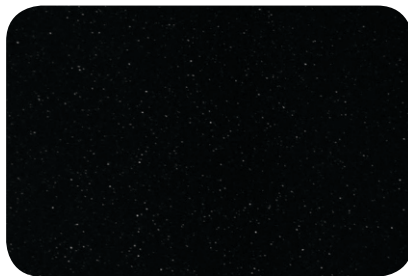
HD-041 MIRROR GOLD ●



HD-042 MIRROR SILVER ●



HD-054 RED SPARKLE ●



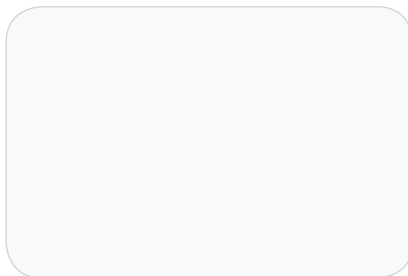
HD-055 BLACK SPARKLE ●



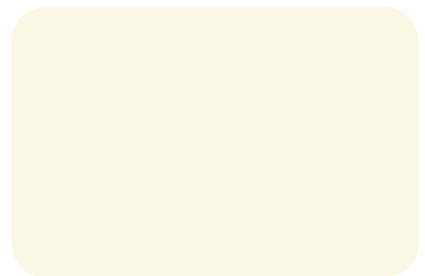
HD-056 WHITE SPARKLE ●



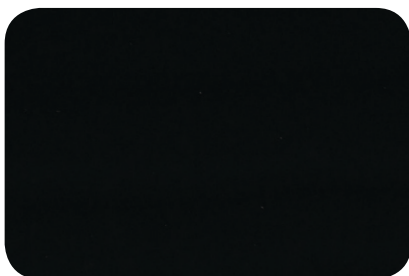
HD-050 RED GLOSS ●●



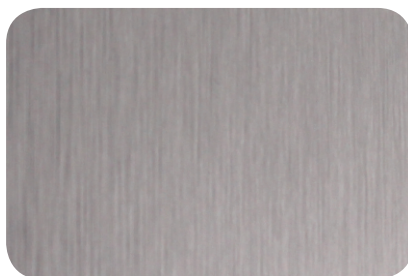
HD-051 WHITE GLOSS ●●



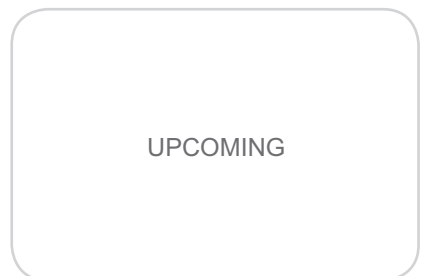
HD-052 IVORY GLOSS ●●



HD-053 BLACK GLOSS ●●

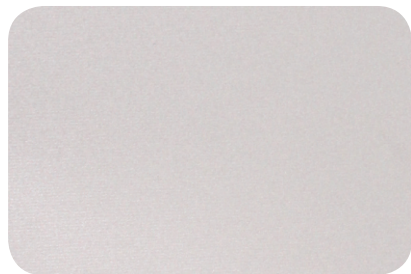


HD-040 BRUSH SILVER ●



UPCOMING

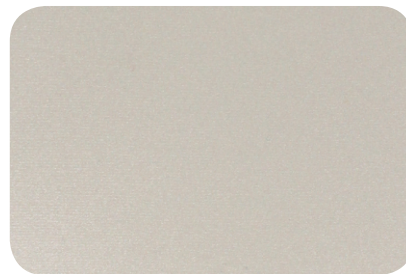
Solid & Metallic Series



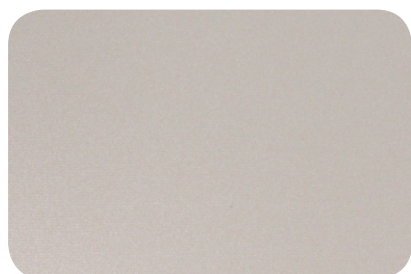
HD-001 BRIGHT SILVER ●●



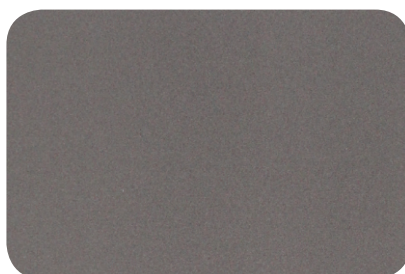
HD-002 SILVER METALLIC ●●



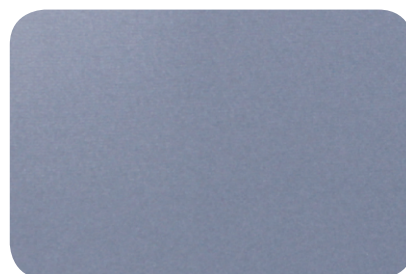
HD-003 CHAMPAGNE SILVER ●●



HD-004 CHAMPAGNE GOLD ●●



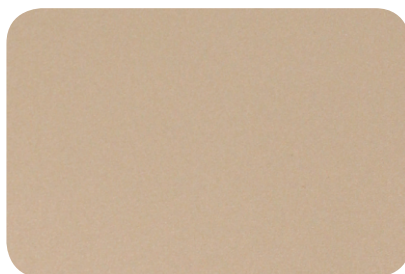
HD-005 METALLIC GREY ●●



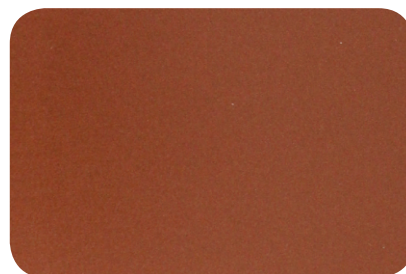
HD-006 BLUE METALLIC ●●



HD-007 ROYAL GOLD ●●



HD-008 PRECIOUS GOLD ●●



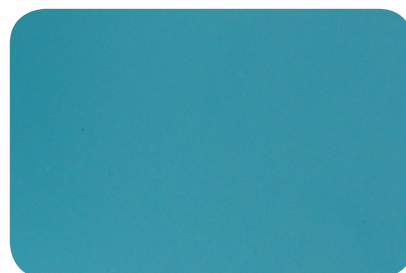
HD-009 COPPER JEWELL ●●



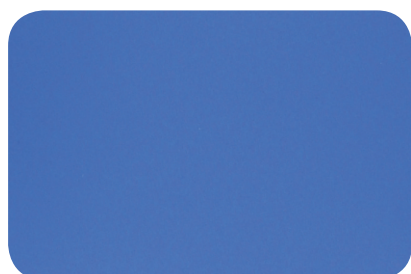
HD-010 DUCTILE COPPER ●●



HD-011 MALLEABLE COPPER ●●



HD-012 GREEN SEA ●



HD-013 VIVO BLUE ●●



HD-014 SAMSUNG BLUE ●●



HD-015 ROYAL RED ●●



HD-016 RICH RED ●●



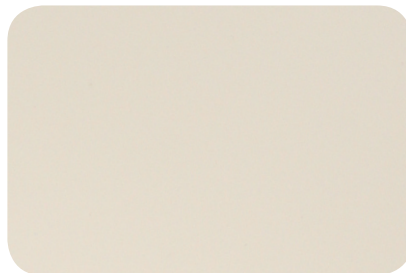
HD-017 BURGUNDY ●●



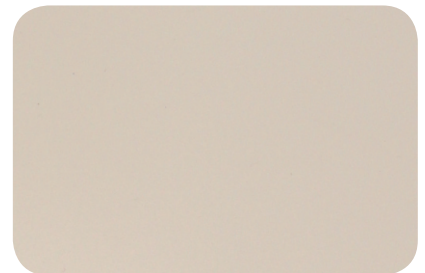
HD-018 NATURAL IVORY ●●



HD-019 GLAIRE WHITE ●●



HD-020 WHITE SMOKE ●



HD-021 SAND DUNE ●



HD-022 BURNING SAND ●●



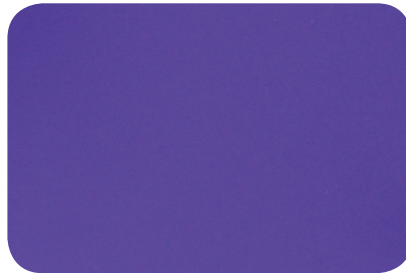
HD-023 EVER GREEN ●



HD-024 OPPO GREEN ●



HD-025 COAL BLACK ●●



HD-026 ROYAL PURPLE ●



HD-027 MANDARIN ORANGE ●●



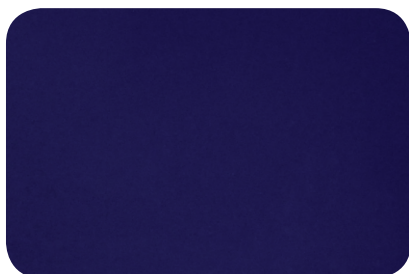
HD-028 PINK CHARM ●



HD-029 DARK BROWN ●●



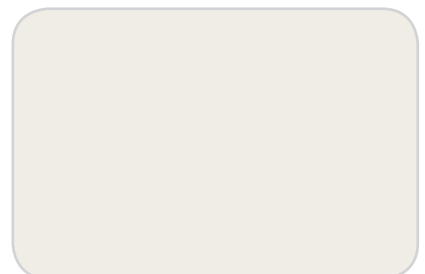
HD-030 YELLOW ●●



HD-031 BLUE SKY ●●



HD-032 LAKE BLUE ●




HD-033 GALAXY WHITE ●●

Also available in ● Exterior, ● Interior & ● HPL 6 mm

The greatest concern in external cladding is upward flaming over a vertical exterior wall, particularly in high-rise buildings. Various types of fire tests are required to examine the fire performance and non-combustibility of building materials. HYNADACOR (FR) not only passes all tests, but it is also certified to meet NBC for external cladding without any height restrictions.

DIMENSIONS		MEASUREMENT	
Thickness	3mm, 4mm, 5mm, 6mm	(±0.2mm)	
Width	1200mm	(±2mm)	
Length	Less than 6000mm	(±4mm)	
Bow	Max 0.5%	of any dimensions	
Diagonal Lines Difference	Max 5mm		
PHYSICAL PROPERTIES		STANDARD	MEASUREMENT
Panel Weight	ASTM D-792	3MM=4.6 Kg/m²	
4MM=5.5 Kg/m²			
Thermal Expansion	ASTM D-696	3X10-5/°C	
Thermal Conductivity	ASTM D-976	0.39Kcal/M.hr.°C	
(4mm)			
Deformation temperature	ASTM D-648	115°C	
MECHANICAL PROPERTIES		STANDARD	MEASUREMENT
Tensile Strength	ASTM D-638	49MPa	
Yield Strength	ASTM D-638	44MPa	
Bending Strength	ASTM C-393	120MPa(4mm)	
Flexural Elasticity	ASTM C-393	2.6X104(4mm)	
Shearing Strength	ASTM D-732	33MPa	
Penetrating Resistance	ASTM D-732	11 kN	
Adhesive Peel off Strength	ASTM D-903	10N/MM	
Wind Pressure resistance	ASTM E-330	Passed	
Resistance against water	ASTM E-331	Passed	
Resistance against air	ASTM E-283	Passed	






TEST REPORT

DATE: 2023/01/26

Report No. : MAN TR-SC500003560



I. Test conducted
 This test was conducted as per DIN 4102-10:1992 DIN 4102-10:1998 and DIN 4102-1:1999 Clause 6.2, and Classification in accordance to DIN 4102-1:1999 Clause 6.1 Class 01 materials.

II. Sample details

Structure	Aluminum composite panel
Color	White
Density	Around 7.2 kg/m ³
Size of sample	1200mmx1200mmx 5mm, & 1000mmx1000mmx 4.5mm

Conditioning
 Prior to testing, the sample was conditioned at least 14 days to constant mass at a temperature of 23 ± 2 °C, and a relative humidity of 60 ± 6 %.

III. Test results
 1) "Strainchuck" Test according to DIN 4102-10:16

Recorded values: The Test force



		Results of "Strainchuck" Test (part 1)				
		Test assemblies No.				
Line	Unit	A	B	C	D	
1	Specimen flange according to DIN 4102 part 10.	-	/			
2	Max. flange height below lower specimen edge.	cm	40			
3	Yena ¹⁾	mm/a x 0.51	/			
4	Molding/burning through	mm/a x 1	/			
5	Back of specimen	NO				
6	Flaming of specimen, Time ²⁾	mm/a x 1	/			
7	Decoloration, Time ³⁾	mm/a x 1	/			
8	Burning/dissolve	NO				
9	Begins ⁴⁾	mm/a x 1	/			
10	Attacks	/				
11	Specimen material falling off in separate droplets	/				
12	Specimen material falling off continuously	/				







JWS : 16/01/2023

 1) Yena is defined as the force in N/mm. 2) Time is defined as the burning period observed at maximum temperature. 3) Decoloration is defined as the color change of the surface of the specimen. 4) Begins is defined as the first appearance of the specimen surface being attacked by the flame.

Page 2 of 6

Created by: 03/02/2023/26

 SHRIHARI INSTITUTE FOR INDUSTRIAL RESEARCH (A Unit of Shriharishree Education Foundation) 19, University Road, Datta - 110007 (India) ISO 9001: 2015 & ISO 14001: 2015 Certified Institute		Website: www.shriharishree.edu.in E-Mail: info@shriharishree.edu.in shriharishree@shriharishree.edu.in	
TEST CERTIFICATE		NO. CI/000001252	
Issued For: Client Code: 52346 Sample No.: 0001-FLTED Date: 4/23/18 FLOOR 3-DL-3, BLOCK KARANDWA CENTRE KARANDWA CENTRE New Delhi KIRALDIA ROAD 8 KIRALDIA Karandwa Karandwa - 1		Date: 09/04/2018 Job No.: 1803-141-2007 Booking No.: B0171803121019 Booking Date: 21/03/2018 Customer Ref No.: SHRIHARI000000018 Issue Date: 21/03/2018	
Sample Description: 1 One sample(s) DESCRIBED AS HYVAARADAL ALUMINUM COMPOSITE PANEL Code: 1803-141-GLASS WHITE, WAS RECEIVED The sampling was not carried out by Shriharishree Institute for Industrial Research. The sample details provided on this test certificate are based on the declaration by the party.			
S/Ns Tests	Results	Previous Approval / Instrument Used	
A. ALUMINUM COMPOSITE PANELS			
1. Tensile Strength, MPa	39	ASTM E1826 - C1a	
2. Tensile Yield (0.2 % Proof), MPa	34	ASTM E1826 - C1a	
3. Elongation, %	More than 180	ASTM E1826 - C1a	
4. Heat Dilation Temperature, °C		Calibrated measuring tools	
5. Penetration, mm	100		
6. Length, mm	100		
7. Panel Weight, kg/m²	7.4	Calibrated Weighing Balance	
8. Composition of one Face (after Surface Finish) Specimen (FT3)	Spectra matched	By Filter	
9. Finish coat thickness, micron	26	ASTM D 1991-13	
10. Dimples	3		
11. Chemical Resistance		ASTMA-2602-05	
12. 10% HCL for 30 minutes	No colour change observed.		
13. 10% H2SO4 for 30 minutes	No colour change observed.		
14. 10% NaOH for 30 minutes	No blisters observed.		
15. 3% Detergent for 72 hrs	No visual change observed.		
16. Water for 24 hrs			
		AUTHORIZED SIGNATORY EMPLOYEE CODE: 1157573	
(SGC/04/04)		Page 1 of 2	
Note: This certificate is valid only for the original sample. Photo: 91-97296727, 97296727 Not issued for items A condition 91-97296727, 97296727			

AML/2018/02/02587 OC/Nr.12627		3/84		Page 2 of 4 03/03/2018	
Customer's Name Service requirement		: SONIA PLASTICS PVT. LTD. Testing of material for Flameability per IS : 15661-2002 Clause 2.3, Annex A, Clause 3.3, Annex B, Clause 3.4 Annex, C.			
1.8 Sample Detail to be submitted by customer Material Manufacturer's Name Material Grade Material Type Component Part No. and Batch No. Drawing No. Date of Testing		: SONIA PLASTICS PVT. LTD NOK Aluminium Composite Panel NA H-118 GLASSH WHITE NA 22.03.18			
2.0 Horizontal Burning Bar Test as per IS : 15661-2002, Clause 3.2 and Annex A		3.0 Horizontal Burning Bar Test as per IS : 15661-2002, Clause 3.2 and Annex A			
2.1 Observation Table. The sample under test is subjected to		3.1 Specified Requirement		3.2 Observation	
No.	Description			Burn Rate (mm/min)	
No.	Description	Test Point 1	Test Point 2	Test Point 3	Test Point 5
1.	Horizontal Burning Rate, non-membrane as per IS : 15661-2002, Clause 3.2, Annex A	The result of the test shall be considered satisfactory if, within the 180 test results into account, the horizontal burning rate is not more than 100 mm/min or if the flame extinguishes before reaching the test measuring point.		0 0 0 0	
(Pl. enter the specified photograph below)					
2.2 Remark		Sample under test Horizontal Burning Rate test requirement was met as per IS : 15661-2002, clause 3.2 and Annex A			
Note: The Announced Material Information is accepted as per ISO/IEC 17025 for use as valid only.					
TYPE/CAT PHOTOGRAPH					
Sample before test		Sample after test			
					
Test Report Completed By  N. D. SHIVATE CHEMIST				Test Report Verified By  P. P. Kulkarni Test Report Approved By  N. S. Kulkarni DEPUTY GENERAL MANAGER	



HYNADECOR[®]
ALUMINIUM COMPOSITE PANELS

An ISO 9001 : 2015 ISO 14001 : 2015 OHAS 18001 : 2007 Certified Company

Head Office: 701, 7th Floor, Kings Mall , Twin District Centre,
Rohini , Sector-10 , Delhi -110085, INDIA

Factory: Khewat No 458, Khatta No-532, Killa No-32/1/2,
2/2/2, Village-Wazidpur Saboli,
Block-Rai Saboli, District – Sonipat-131001, Haryana. INDIA
Email: factory@hynadecor.com

info@hynadecor.com
www.hynadecor.com



*Colour may vary from batch to batch $\triangle \pm 5$

To avoid colour variation, place an order the total quantity for one particular building.
To avoid possible relection of light variation, install panels in the same direction as
marked on the protective ilm.